

# **Assembly Instruction**

**and**

# **Update Manual**

**Remote-Control-Module**

**for  
DA428 / DA230**



## **1. Index**

1. Index.....	1
2. Assembly Instruction.....	2
3. Update Manual.....	4
3.1 Preparations.....	4
3.2 Update process.....	5

## 2. Assembly Instruction

Disconnect the amplifier from mains power. Firstly, allow the amplifier stay disconnected for approximately 15 minutes. Flip over the unit in order to gain access to the bottom cover. Loosen the two screws on the left and right side part of the amplifier and also unscrew the six screws on the top and bottom side of the housing.

Caution: Be aware that a grounding cable (green-yellow colored) connects the housing part. This cable must be unplugged carefully.

**Bare in mind that the power electronics inside the unit may still incorporate live voltages and therefore must not be touched! Only ply in areas described below!**

Loosen the four screws fixating the standard RSNC-Module on its back-plane. Carefully remove the module. Retain the screws for the succeeding assembly.

**Hint:** Technical restrictions required a short flat ribbon cable. Handle this cable with care to avoid damage.

Carefully squeeze the connector by hand to loosen up its locking mechanism and pull it in parallel to the board. Place the module on a metallic surface i.e. on the bottom plate of the amplifier. You may later repack it into the cardboard box supplied with the Remote Control Module.

By applying only little force plug the flat ribbon cable to the Remote Control Module. Caution! Rough handling will easily damage the connector. Should you encounter difficulties plugging the cable to the Module the connector may be situated incorrectly by mistake and needs to be turned. There is only one preferential direction the plug can be connected.

Insert the Remote Control Module to the panel cut-out. It should be located similar to the way the RSNC-Module had been mounted. Place the supplied toothed lock washers inbetween the Remote Control Module and the amplifiers back-plate and then insert the screws.

**Pay attention not to leave behind any screws or washers in the amplifier since this can cause short circuits and therefore a potential malfunction an damage of your amplifier.**

Tighten the screws with moderate force. Place the bottom panel into mounting position and replug the grounding cable to this panel. Reposition the bottom panel on to the amplifier and mount all previously removed screws.

Now that the Remote Control Module is installed you may use the amplifier's new functionalities after executing a few configuration steps only.

To be able to use the Remote Control Module in combination with the amplifier a firmware version above 2.10 is required. Check the version number by selecting the entry

Menu → Software → Firmware Versions.

The display's third row will show the firmware number.

If necessary, you'll find the update at  
[www.kme-speaker.de](http://www.kme-speaker.de) → Support → Downloads → Firmware Updates

All files of this downloaded “.zip” file must be extracted into the root directory of a SD Memory Card.

Hint: an Update Manual containing further instructions is available on the same Website.

The following menu options need to be edited to set up the Remote Control Module:

Via

*Menu* → *System* → *Device Name*

you may set a distinctive name using the rotary encoders.

This name will be used to identify the amplifier in the network area using DHCP for IP address assignment.

Configure the network parameters (enable / disable DHCP and – if applicable – desired IP-address and its corresponding Subnet Mask, and possibly Gateway) by selecting the following menu item:

Menu → Options → Ethernet/NC

Now you're done! Set the network's parameters in correspondence to your other network equipment. If necessary contact your network administrator for assistance.

When using DHCP the amplifier can be accessed by loading

*http:\\DEVICENAME*

in any up to date web browser. Here “DEVICENAME” represents the name you have set in the system options.

For manual name addressing you'll have to establish connection to the amplifier by accessing its distinct IP address (that is, the address you have configured in system options), for example

<http://192.168.1.101/>

By setting a bookmark for this address you may easily establish a connection the next time.

## 3. Update Manual

### 3.1 Preparations

Before updating the K.M.E. Remote-Control-Module please check the version number of your module. This number can be found at the top of the web pages (see the red mark shown in figure 1).

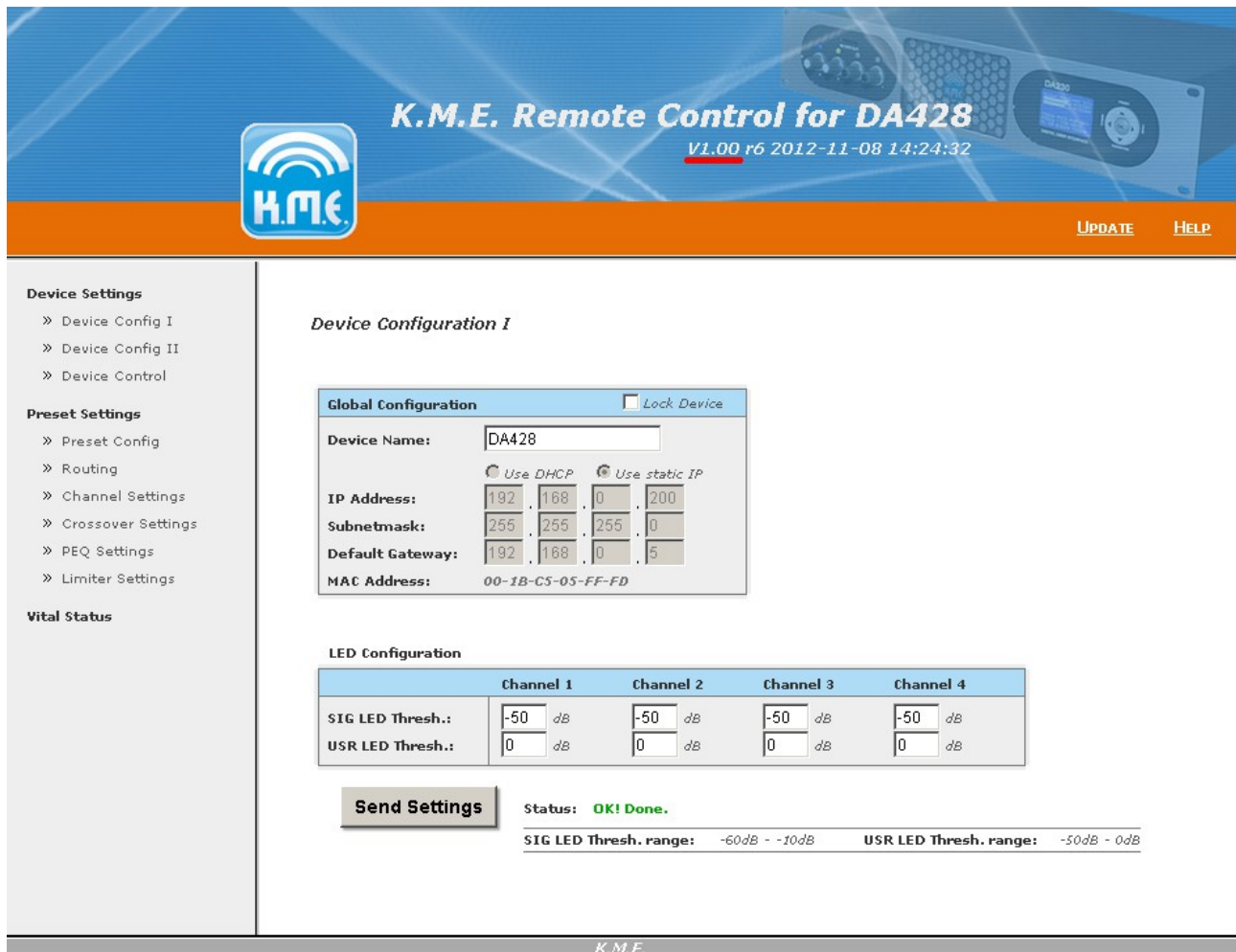


Figure 1.: Website with version number indication

Please compare this number (for example V1.00 in Figure 1) to the version number found in the filename of the update file. If these numbers are equal, the firmware is up to date and you do not need process the update.

Hint: Version numbers in file names uses an underscore instead of a dot. (for example V1\_00 instead of V1.00)

If you can't find this number at the top of the web pages a version prior to V1.00 is running on your module. For updating such a pre-release please contact the K.M.E.-Support.

If you find this number please continue with the update process as described in 3.2.

**If the current version is a version prior to V2.00 r15 you must process the update (as described in 3.2) with the file PreRCMv2.tar first and next with the actual update file.**

## 3.2 Update process

To start the update process please load a web page of the Remote-Control-Module. Next, click the update link at the top right corner (see the red mark shown in figure 2).

**K.M.E. Remote Control for DA428**  
V1.00 r6 2012-11-08 14:24:32

**UPDATE** **HELP**

**Device Settings**

- » Device Config I
- » Device Config II
- » Device Control

**Preset Settings**

- » Preset Config
- » Routing
- » Channel Settings
- » Crossover Settings
- » PEQ Settings
- » Limiter Settings

**Vital Status**

**Device Configuration I**

**Global Configuration** ☐ Lock Device

Device Name: DA428

☒ Use DHCP ☐ Use static IP

IP Address: 192 . 168 . 0 . 200

Subnetmask: 255 . 255 . 255 . 0

Default Gateway: 192 . 168 . 0 . 5

MAC Address: 00-1B-C5-05-FF-FD

**LED Configuration**

	Channel 1	Channel 2	Channel 3	Channel 4
SIG LED Thresh.:	-50 dB	-50 dB	-50 dB	-50 dB
USR LED Thresh.:	0 dB	0 dB	0 dB	0 dB

**Send Settings**

Status: **OK! Done.**

SIG LED Thresh. range: -60dB - -10dB USR LED Thresh. range: -50dB - 0dB

K.M.E.

Figure 2: Website with update link

Now the module will load a new website (see figure 3). To start the update click the button located to the right of the label "Select Update File:" and choose the appropriate update file. The current file is available on request by E-Mail or can be downloaded at [www.kme-speaker.de](http://www.kme-speaker.de).

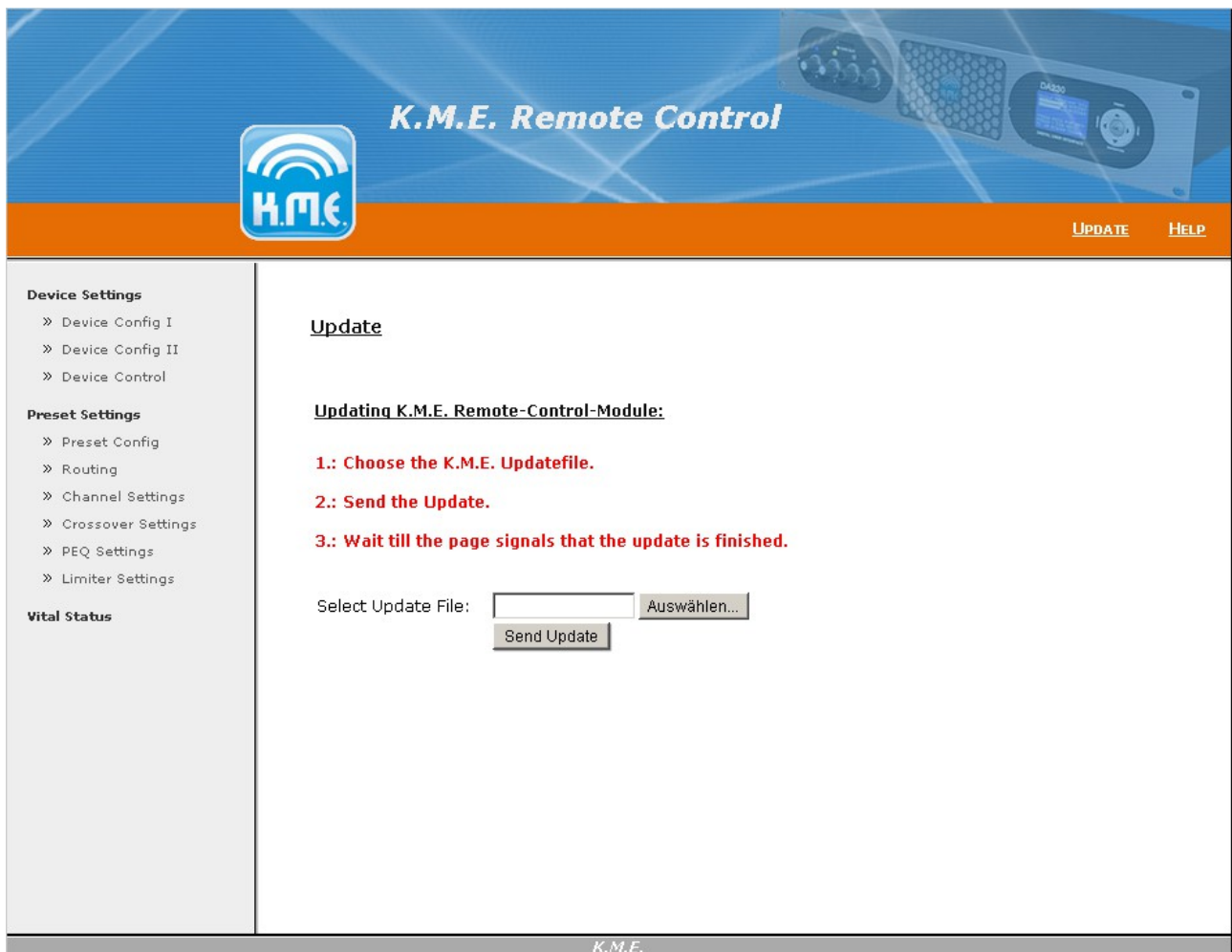


Figure 3: Starting the update

After choosing the file you may continue by clicking the "Send Update" button. Subsequently, the browser will transmit the update to the Remote-Control-Module. During this task the module informs you as soon as the transfer is completed and the actual update-process has started (see figure 4).

**Please wait until the module has finished the entire update (see figure 5).**

**Depending on the size of the update the update process can take a few minutes.**

In case a problem has occurred during the update please power off the device for some seconds before trying to update again. If another attempt doesn't succeed, please contact the K.M.E. Support for assistance.

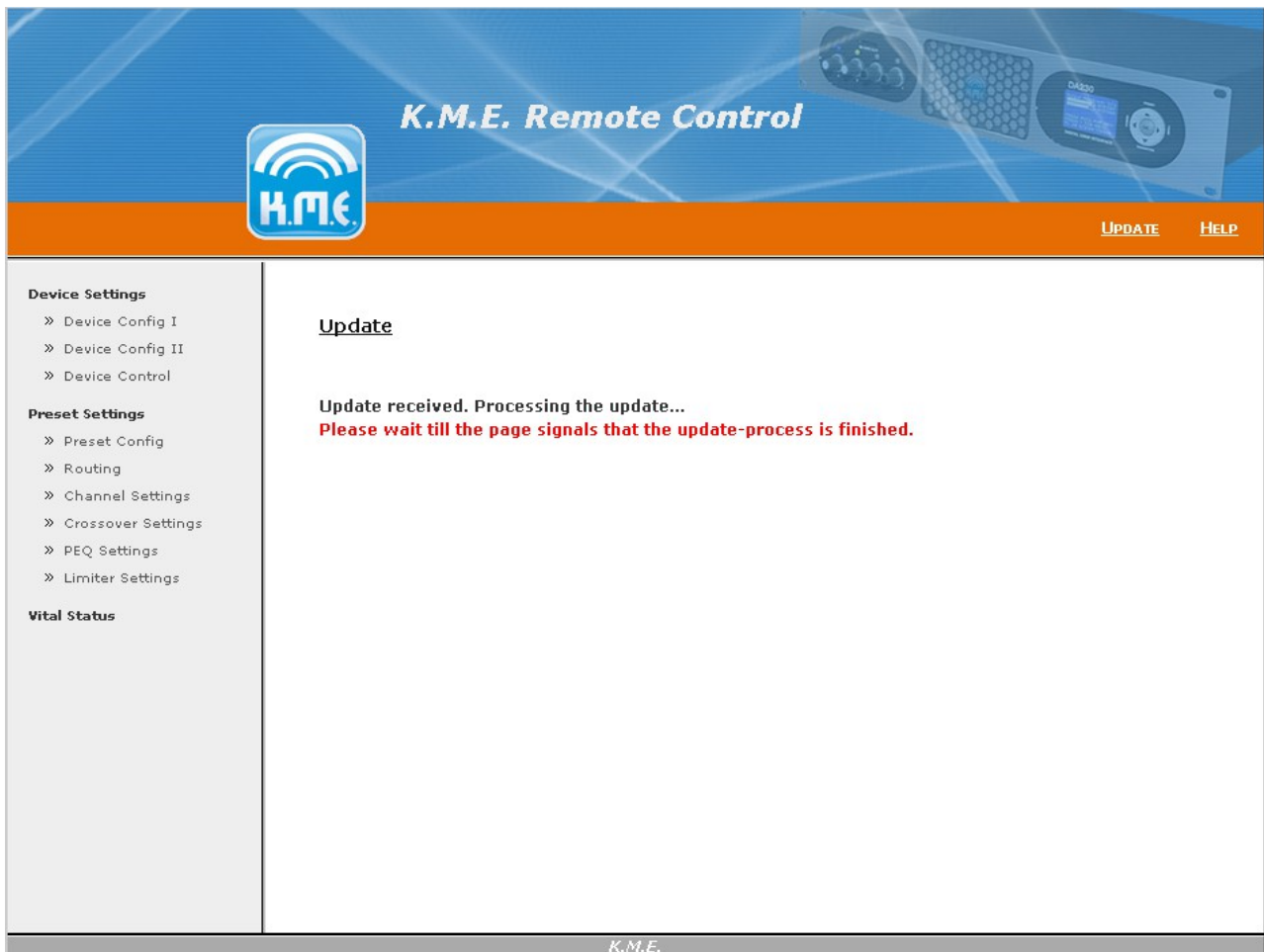


Figure 4: The update is transmitted, please wait until the update has finished.



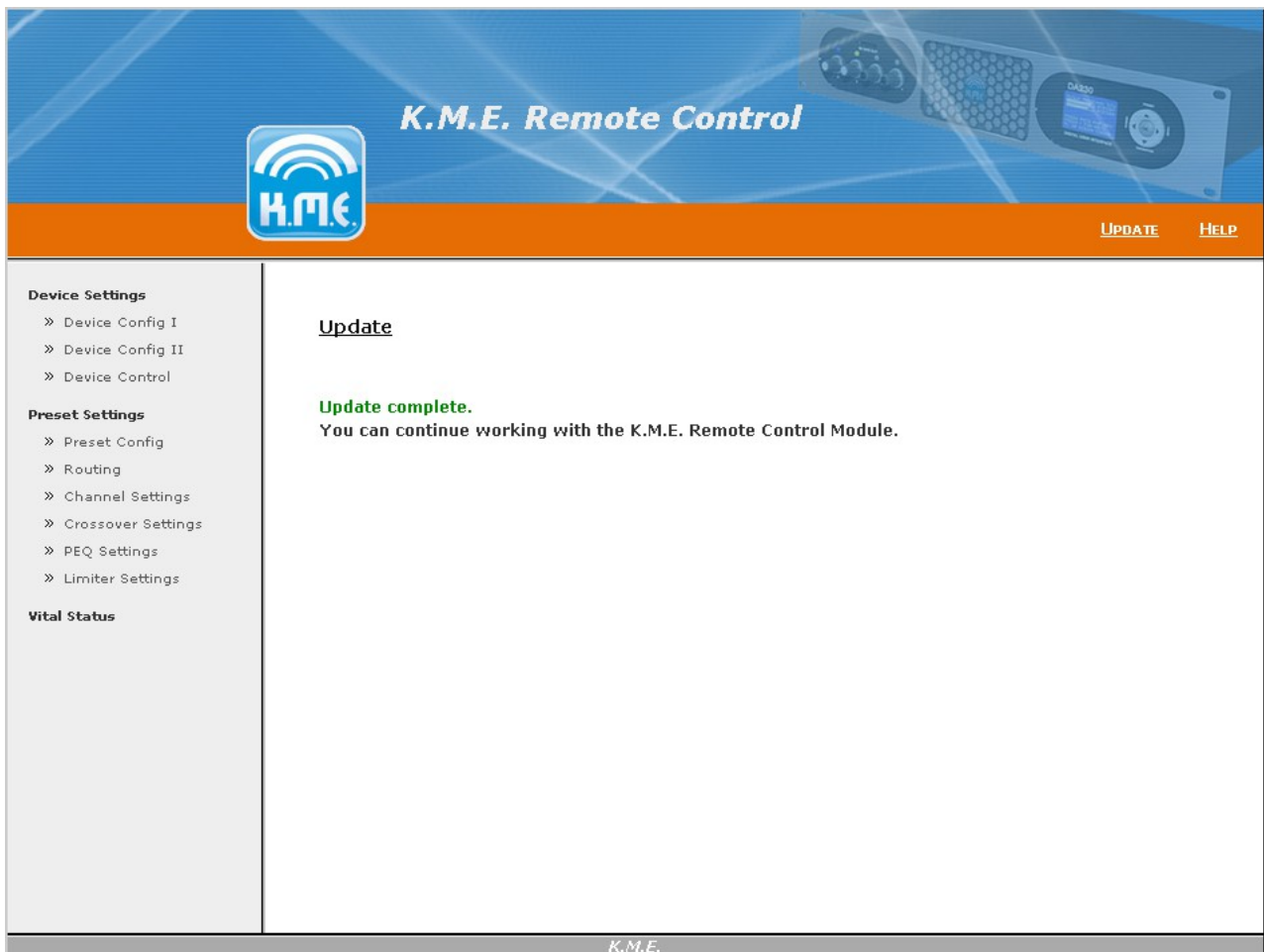


Figure. 5: The Update was successfully completed